



dividend

Oracle Primavera Implementation Specialists



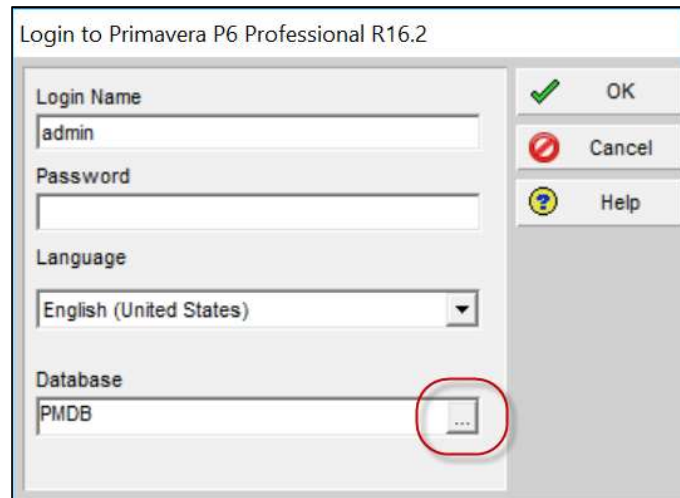
Specialized
Primavera P6 Enterprise
Project Portfolio
Management 8

How To:

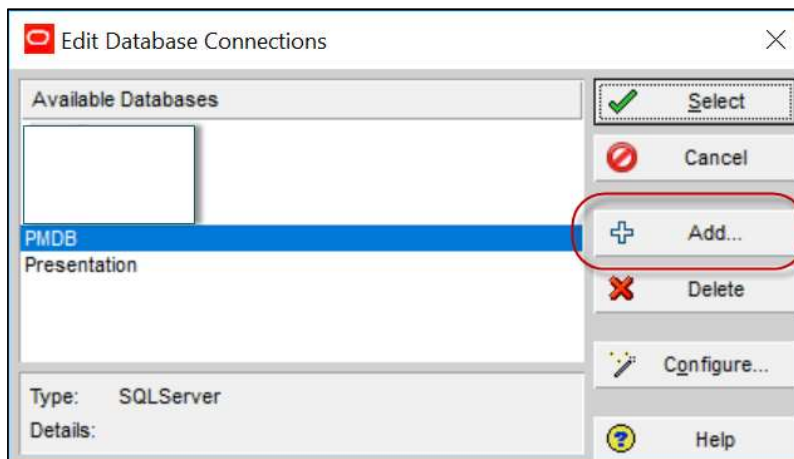
Create an Additional Standalone Database in P6 v16.2

This document explains, with screenshots how to create an additional P6 Standalone database. Version 16.2 is being utilised for the purpose of the screenshots.

1. Open P6 and click the button as shown below



2. Click **Add**



3. Give the new Database a name eg Client name, or purpose of database i.e. Schedule Imports
4. Click **Add a New Standalone database and connection**
5. Click **Next**

Primavera P6 Professional R16.2

Database Configuration

Configure P6 Professional Standalone Connection

You can add a new standalone database and connection or add a connection to an existing standalone database.

Database Alias
NameOfNewDatabase

Add a connection to an existing standalone database
 Add a new standalone database and connection

Cancel Back Next Finish

6. Choose a new password if required
7. Click **Next**

Primavera P6 Professional R16.2

Database Configuration

Enter the admin username and password for the database. The admin user is the single user with access to the standalone database.

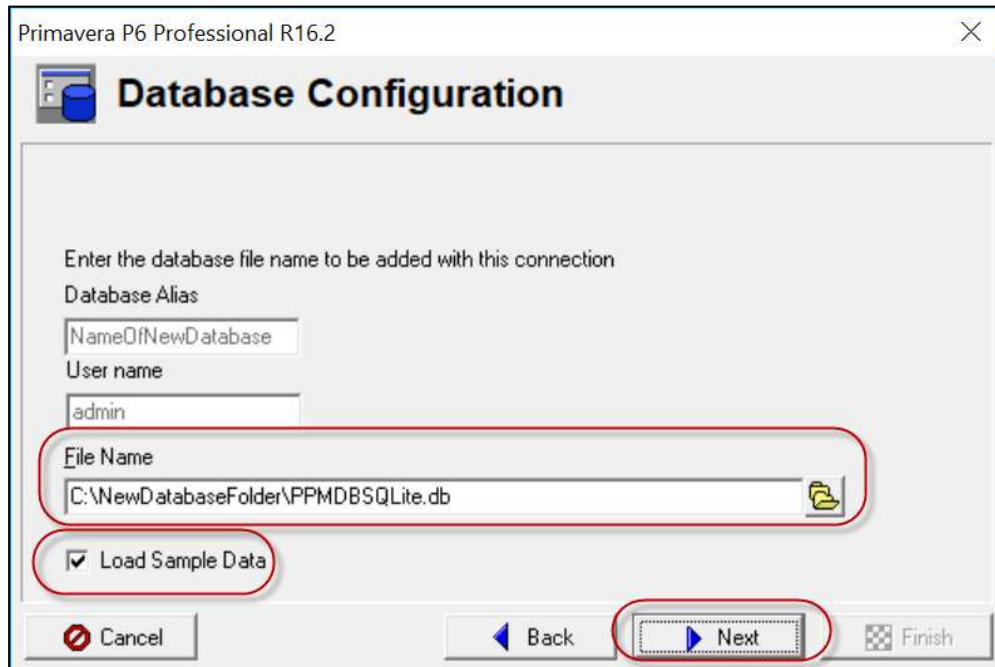
Database Alias
NameOfNewDatabase

Login Name Personal name
admin david

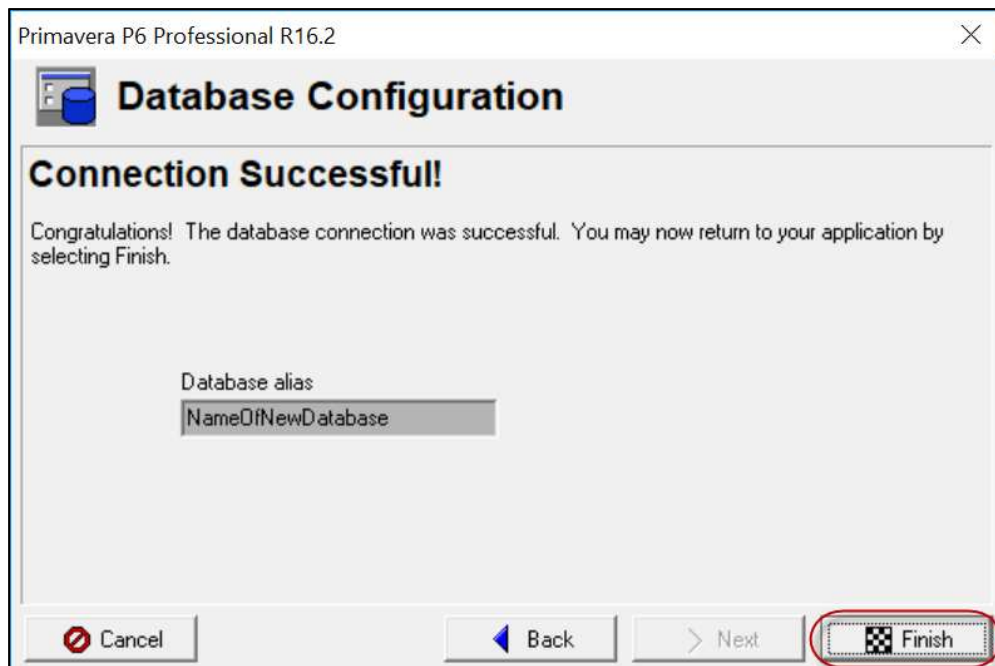
Enter new password Confirm new password

Cancel Back Next Finish

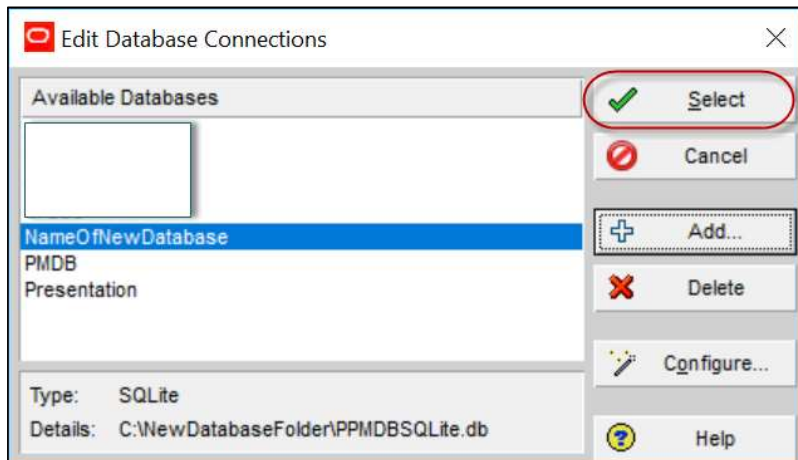
8. Select a folder on your device to store and save the new database. We recommend saving it to a folder that is backed up, but if stored to a network drive be aware that the performance will be a little slower
9. Untick the **Load Sample Data** box if you want a completely empty database
10. Click **Next**



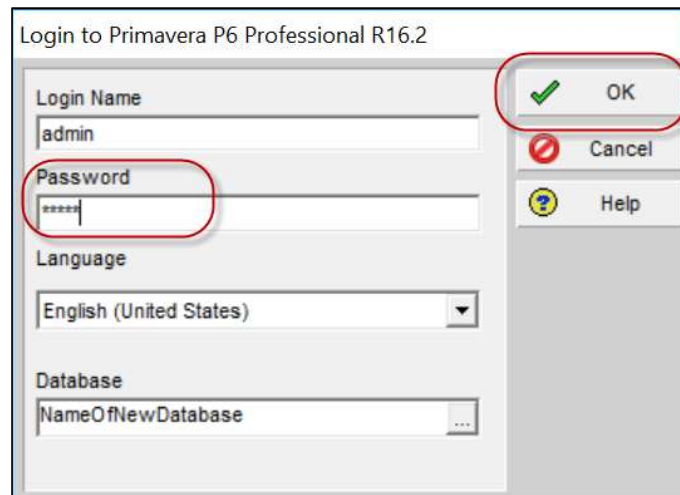
11. Click **Finish**



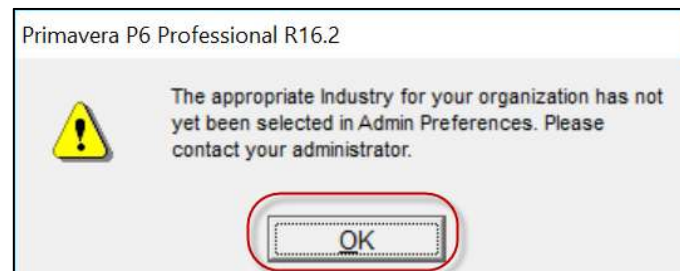
12. Click the new database
13. Click **Select** to open



14. Enter the password as created at step 6, and then click **OK**

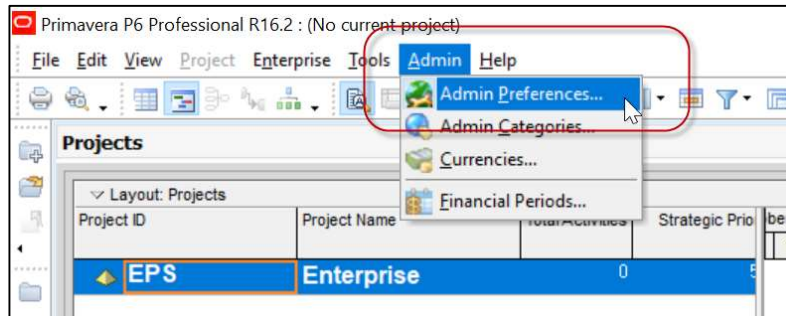


15. You will receive a warning message stating to select an appropriate industry.
Click **OK**

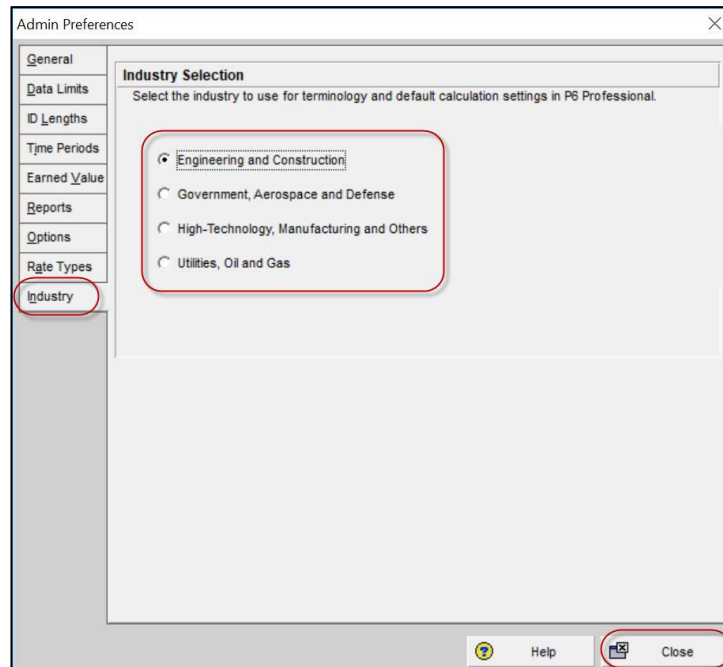


16. To change the Industry settings, click **Admin** then **Admin Preferences**
17. For deciding which to select, or for further information, click the following link on Oracle's help page

http://docs.oracle.com/cd/E68198_01/English/Installing/p6_pro_install_config_p6_eppm/helpmain.htm?toc.htm?6747.htm



18. Click the **Industry** tab, your selection and then click **Close**



19. Click **OK** to the following warning message

