

Oracle's Primavera Analytics for Primavera P6 Enterprise Project Portfolio Management and Primavera Unifier

Oracle's Primavera Analytics is a packaged business intelligence solution that provides valuable insights into your projects and portfolios in Oracle's Primavera P6 Enterprise Project Portfolio Management and Primavera Unifier so you can uncover trends and identify issues before they escalate, helping you to make better informed decisions.

INDUSTRY BEST-PRACTICE ANALYTICS

Primavera Analytics is an enterprise-wide business intelligence portal that benefits your organization by providing transparency into project portfolio performance and a single source of the truth.

Oracle has collected years of best-practice metrics, key performance indicators (KPIs), reports, and scorecards from project, program, and portfolio managers to create Primavera Analytics. By implementing Primavera Analytics, you can immediately reap the benefits of proven methods of enhanced resource analysis, variance analysis, earned value management, and cost and schedule performance.

With Primavera Analytics, you can leverage the power and flexibility of the Oracle Business Intelligence platform to add your own reports, scorecards, and KPIs to the solution beyond the pre-configured set of dashboards. You have full control to modify the default dashboards and can build your own reports.

Key Benefits

- Understand performance and trends across all your projects and portfolios
- Gain greater insight into your schedule and cost metrics
- Access pre-built analytics and dashboards based on best practices
- Customize reports and portals to meet your individual business needs
- Use pre-configured industry samples based on asset-intensive use cases
- Immediately understand exceptions and perform root cause analysis
- Leverage the power of Oracle Business Intelligence (BI) including mobile support and geospatial visualization
- Includes Oracle's Primavera Data Warehouse

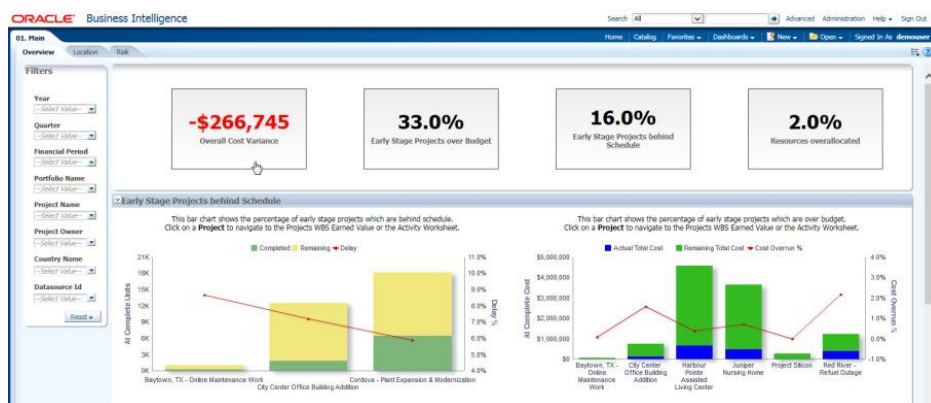


Figure 1. The landing page for Primavera Analytics helps you quickly identify which projects in your portfolios are meeting, exceeding or are below expectations.

This document is for informational purposes. It is not a commitment to deliver any material, code, or functionality, and should not be relied upon in making purchasing decisions. The development, release, and timing of any features or functionality described in this document remains at the sole discretion of Oracle.

ROOT-CAUSE ANALYSIS

Primavera Analytics provides powerful drill-down capabilities. You can move from a high-level portfolio view to specific projects to uncover the causes of negative project schedule or cost performance. Once you have found the problem, you can drill directly into Primavera P6 EPPM or Primavera Unifier from the Primavera Analytics dashboard to take corrective action.

MANAGE BY EXCEPTION

You will quickly identify which projects are performing well and exceeding expectations, as well as those negatively affecting your portfolios, your budgets, your cash flow, and your staffing issues. By focusing on the problem areas, you can direct proper management attention to projects which do not align to strategic objectives, are over- budget, or are under-performing.



Figure 2. Burn down charts with drill-down features provide valuable insight into project progress.

SOLUTION BENEFITS

Transparency

Primavera Analytics will give your entire organization a single BI solution where published project performance indicators, trends, statistics, graphs, and geospatial maps are available through a self-service portal. With the flexibility of the Oracle BI engine, you can combine your project data from your instances of Primavera Unifier and Primavera P6 EPPM with information from your ERP systems, financial data, or customer data to create a single view of the truth across the enterprise. This provides an increased level of transparency and visibility into your business processes and project performance needed to maximize efficiencies and return on investment.

Security and Performance

Primavera Analytics provides business intelligence built on top of the Primavera Data Warehouse so that you can easily report from dashboards and run ad-hoc queries, without sacrificing security and performance:

Primavera P6 EPPM and Primavera Unifier security privileges are utilized throughout the solution so that non-privileged users do not have visibility into sensitive or confidential

Key Features

- Cloud Service and on-premise offerings
- Publish project, portfolio and program performance on your enterprise portal
- Personalize your dashboards for all organizational roles from team members to project managers to executives
- Analyze early-warning indicators for project and portfolio problem areas
- Manage resource efficiencies across your entire enterprise
- Understand your cost sheet, cash flow, and business process data across all projects and portfolios
- Analyze project performance trends overtime to help predict future results
- Easily download any report to any format to use in your project status or portfolio review meetings
- Manage off-line maintenance projects using daily burn downs and performance metrics
- Track routine/on-line maintenance projects using KPIs based on INPO AP-928 standards

information.

Dashboard reports and ad-hoc queries can be run against active projects as well as your entire enterprise history of projects without negatively affecting performance on your live systems. The Oracle BI engine performs offline aggregations and summaries of large, complex data sets for fast query responses.

Productivity

By using a familiar web-based portal, Primavera Analytics is quick to learn, easy to access and navigate, and requires very little training. Each dashboard is also visible in the Oracle BI Mobile HD app and may be printed or saved directly to a number of popular formats, including PDF, Microsoft Word®, Microsoft Excel®, Microsoft PowerPoint®, HTML and others.

Actionable BI

You can focus on and directly improve your project performance with early-warning indicators, trending and forecasting. Primavera Analytics alerts you about problem areas in your projects and allows you to take corrective action to keep your projects on track.



Figure 3. Geospatial maps allow project, cost, business process, resource, and activity metrics to be visualized by geographic location with full drilldown capabilities.

CONNECT WITH US

USA: +1.800.423.0245 or visit www.oracle.com/construction-and-engineering

UK: +44.207.5626.827 or visit www.oracle.com/uk/construction-and-engineering

France: +33 437.434.606 or visit <https://www.oracle.com/fr/construction-engineering/>

Germany: +49 610.3397.003 or visit <https://www.oracle.com/de/construction-engineering/>

Find your local office at oracle.com/contact.

 blogs.oracle.com/construction-engineering

 [linkedin.com/showcase/oracle-construction-and-engineering/](https://www.linkedin.com/showcase/oracle-construction-and-engineering/)

 [facebook.com/OracleConstEng](https://www.facebook.com/OracleConstEng)

 <https://www.youtube.com/channel/UC6v1TnD3v0Bp0R1U53zD12w>

 twitter.com/OracleConstEng

Integrated Cloud Applications & Platform Services

Copyright © 2019, Oracle and/or its affiliates. All rights reserved. This document is provided for information purposes only, and the contents hereof are subject to change without notice. This document is not warranted to be error-free, nor subject to any other warranties or conditions, whether expressed orally or implied in law, including implied warranties and conditions of merchantability or fitness for a particular purpose. We specifically disclaim any liability with respect to this document, and no contractual obligations are formed either directly or indirectly by this document. This document may not be reproduced or transmitted in any form or by any means, electronic or mechanical, for any purpose, without our prior written permission.

This device has not been authorized as required by the rules of the Federal Communications Commission. This device is not, and may not be, offered for sale or lease, or sold or leased, until authorization is obtained.

Oracle and Java are registered trademarks of Oracle and/or its affiliates. Other names may be trademarks of their respective owners.

Intel and Intel Xeon are trademarks or registered trademarks of Intel Corporation. All SPARC trademarks are used under license and are trademarks or registered trademarks of SPARC International, Inc. AMD, Opteron, the AMD logo, and the AMD Opteron logo are trademarks or registered trademarks of Advanced Micro Devices. UNIX is a registered trademark of The Open Group. 0319

 | Oracle is committed to developing practices and products that help protect the environment